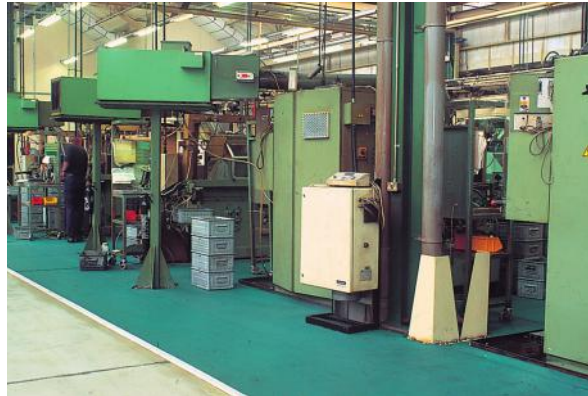


F I R M A G R I P

Close mesh matting for small wheeled traffic

For busy industrial areas where trolleys and small-wheeled vehicles are in use and liquids may be liable to be spilled.

Firmagrip is a quality close mesh matting that is dense enough to prevent smaller components falling through, yet is so effective at drainage it carries the highest certification. Add to that excellent slip resistance and you've got a real winner.



BENEFITS

- Certified slip resistance DIN 51130: R11
- Excellent drainage DIN 51130: V10
- Ideal for small wheeled traffic
- Chemical, oil and acid resistant
- Easy to cut on site, contours to uneven surfaces
- Quick to install
- Fire resistant
- Enhanced branding or styling

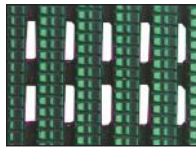
FEATURES

- Diamond cut pattern
- Two layer construction
- Close mesh construction
- Non-porous PVC (impermeable to fluids)
- Made from flexible PVC
- Supplied in 10m rolls
- Certified EN 13501: Cf1 - S1
- 3 standard colours

STANDARD COLOURS



RED*



GREEN



BLACK

Other colours available on request. * Red colour is not colourfast in direct sunlight.

STANDARD SIZES

PRODUCT	HEIGHT	STANDARD ROLL OPTIONS**		
Firmagrip	14mm (9/16")	10 x 0.6m (33' x 2')	10 x 0.91m (33' x 3')	10 x 1.22m (33' x 4')

**Contact us for bespoke dimensions.

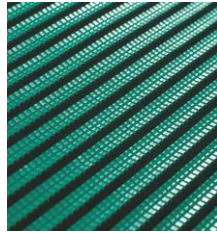
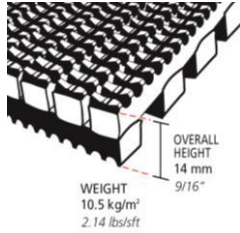


PRODUCT DATA SHEET: FIRMAGRIP

Jun-18

SIZES & WEIGHTS

	All dimensions are nominal		Height (mm)	Lengths (m)	Widths (cm)		Weight (kg/m ²)
	Tolerances (mm)		+/- 0.5	0+0.3	+/- 1		
Firmagrip	14	10	60	91	122	10.5	



GENERAL

APPEARANCES

Open grid "heelproof" design on a diamond cut surface

COLOURS

Available in homogenous standard colours; Green, Red, Black.
Red colour is not colourfast in direct sunlight. Other colours available on request.

DURABILITY

One piece welded construction for maintenance free life.

WORKABILITY

Available in rolls for ease of installation. Easy to cut to size and shape.
Supplied in rolls with top ribs facing outwards. Requires inverting once rolled out prior to use.

USES

All locations, both indoor and outside.

TECHNICAL DATA

ACOUSTIC

Excellent sound absorption properties.

CHEMICAL

Resistant to most acids, alkalines and oils. For specific chemical resistances, see www.plastexmatting.com/uploads/4/4/0/0/44003899/pvc-chemical-resistance.pdf

COMPOSITION

Flexible Polyvinyl Chloride (PVC).

ENVIRONMENT

Black colour is made from post-industrial recycled PVC, always with a minimum content of 30% up to 100%.
Plastex does not use any substances currently included in the SVHC (Substances of Very High Concern) list under R.E.A.C.H.* in any matting products. All products are 100% recyclable.
* Registration, Evaluation, Authorisation and Restriction of Chemical substances

FIRE

EN ISO 13501 - 1 : 2007 - Cf1 - S1

HYGIENE

Non-porous 100% Virgin PVC - Inhibits the growth of bacteria.

REVERSION

Thermoplastic shrinkage can result in size reductions up to 2%. Accelerated in hot environments. Refer to www.plastexmatting.com/uploads/4/4/0/0/44003899/vinyl-matting-dimensional-stability.pdf

SLIP RESISTANCE

DIN 51130: R11, V10

THERMAL

Functional -23°C +60°C (slight size variation may occur at temperature extremes).

UV LIGHT

Resistance to PVC degradation.

WARRANTY

4 years. See www.plastexmatting.com/uploads/4/4/0/0/44003899/warranty.pdf

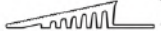


Plastic Extruders Ltd, Russell Gardens, Wickford, SS11 8DN, UK
Tel: +44(0)1268 571116

Web: www.plastexmatting.com

PRODUCT DATA SHEET: FIRMAGRIP

ANCILLARIES



14mm x 60mm x 10.1m
(9/16" x 2 1/2" x 33')

60mm PVC edging strip

Supplied in rolls of 10.1m (33') length with cold welding paste.

Colours: Black, Dark Grey, Dark Brown, Holly Green, Oxford Blue, Yellow



14mm x 100mm x 10.1m
(9/16" x 3 3/4" x 33')

100mm PVC edging strip

Supplied in rolls of 10.1m (33') length with cold welding paste.

Colours: Black, Dark Grey, Yellow



15mm x 45mm x 2m
(5/8" x 1 13/16" x 6'6")

45mm Aluminium edging strip

Supplied in sections of 2m (6'6") length with fixing screws and plugs.

Colours: Anodised Aluminium, Powder Coated Yellow

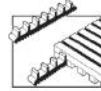


14mm x 2.5m
(9/16" x 8'2")

Snap Track

2 part snap track can be welded to join rolls end to end or side to side for large area covering. Supplied with welding paste.

Colours: Black, Dark Grey



Connector clips - Side to side

For joining sections of matting together side to side. Supplied in packs of 10.